

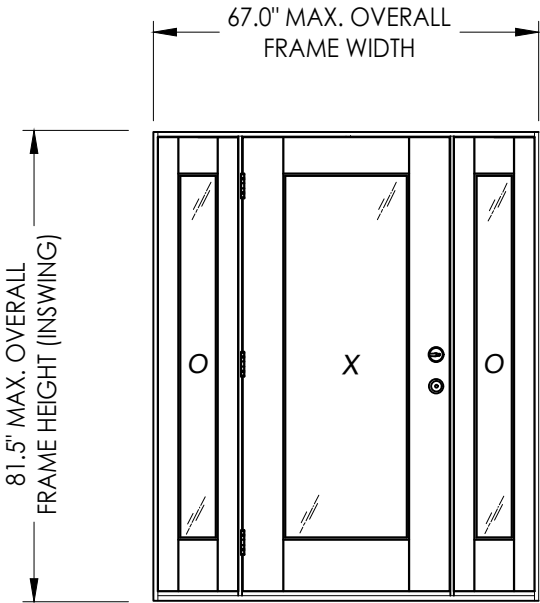
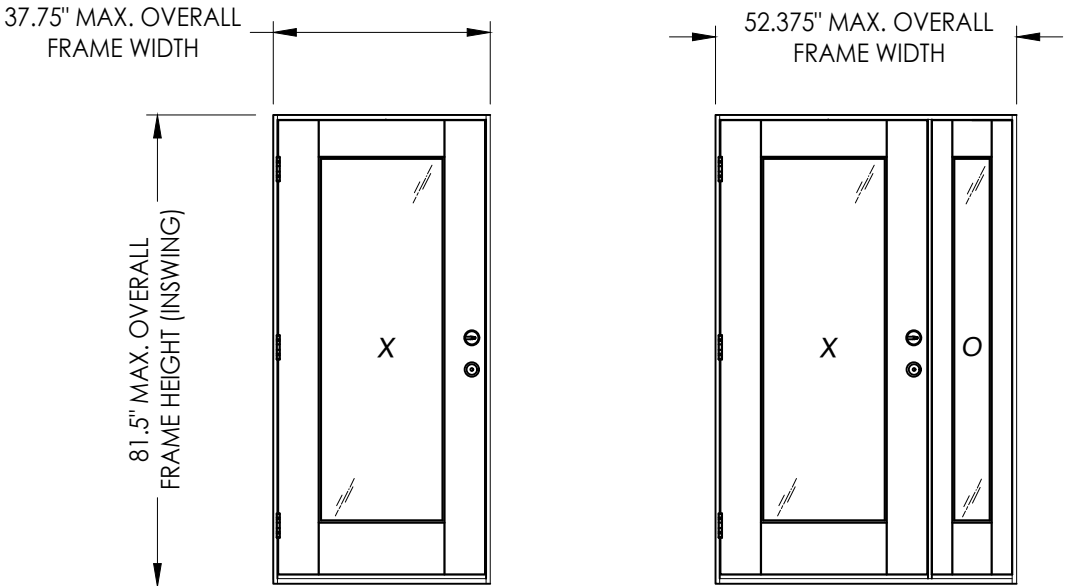


GLAZED WOOD ENTRY DOOR  
SINGLES w/ or w/out SIDELITES  
INSWING  
"NON-IMPACT"

GENERAL NOTES

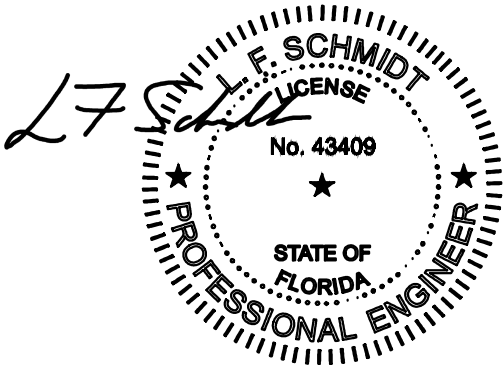
- 1. This product has been evaluated and is in compliance with the 8th Edition (2023) Florida Building Code (FBC) structural requirements excluding the "High Velocity Hurricane Zone" (HVHZ).
- 2. Product anchors shall be as listed and spaced as shown on details. Anchor embedment to base material shall be beyond wall dressing or stucco.
- 3. When used in areas requiring wind borne debris protection, this product is required to be protected with an impact resistant covering that complies with FBC Sections 1609.1.2 & R301.2.1.2.
- 4. For 2x stud framing construction, anchoring of these units shall be the same as that shown for 2x buck masonry construction.
- 5. Site conditions that deviate from the details of this drawing require further engineering analysis by a licensed engineer or registered architect.

TABLE OF CONTENTS	
SHEET #	DESCRIPTION
1	Typical Elevations, Design Pressures & General Notes
2	Door Panel Details & Glazing Details
3	Sidelite Panel Details
4	Elevations
5	Horizontal & Vertical Cross Sections (2X Buck)
6	Horizontal & Vertical Cross Sections (1X Buck)
7	Horizontal & Vertical Cross Sections (Direct to Masonry)
8	Horizontal Cross Sections
9	Vertical Cross Sections
10	Buck Anchoring
11	Frame Anchoring & Hardware Details
12	Bill of Materials & Components



CONTINUOUS HEAD & SILL

CONFIGURATION	MAX. FRAME DIMENSION	DESIGN PRESSURE (PSF)	
		INSWING	
		POSITIVE	NEGATIVE
X	37.75" x 81.5"	+50.0	-55.0
OX/XO	52.375" x 81.5"	+50.0	-55.0
OXO	67.0" x 81.5"	+50.0	-55.0



This item has been digitally signed and sealed by L. F. Schmidt, P.E. on the date adjacent to the seal.  
Printed copies of this document are not considered signed and sealed and the signature must be verified on any electronic copies.

THIS PRODUCT APPROVAL IS VALID ONLY FOR THE STATE OF FLORIDA

Documents Prepared By:  
Lyndon F. Schmidt  
P.E. No. 43409

DOORSCAPES  
WOOD DOOR

PART OR ASSEMBLY:  
TYPICAL ELEVATION, DESIGN  
PRESSURES & GENERAL NOTES

28/02/23  
UPDATE TO 8TH ED. (2023)

18/06/20  
UPDATE TO 7TH ED. (2020)

NO. DATE

REVISIONS

DATE: 1/22/19

SCALE: N.T.S.

DWG. BY: MT

CHK. BY: LFS

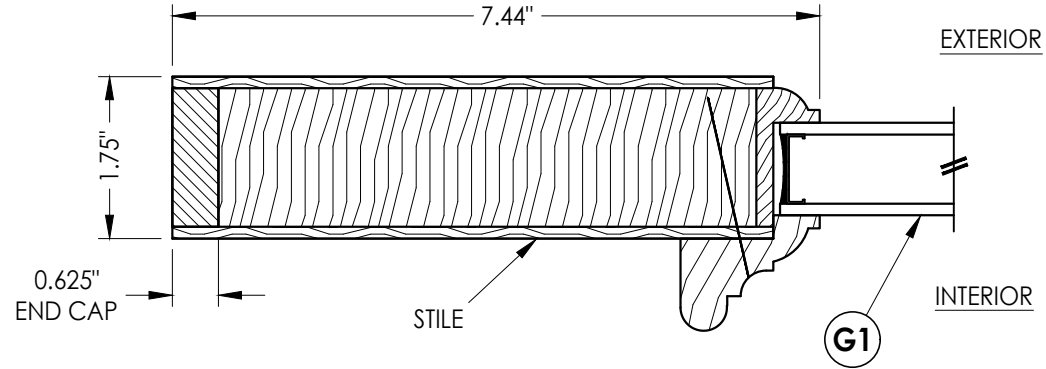
DRAWING NO.: FL-28833.1

SHEET 1 OF 12

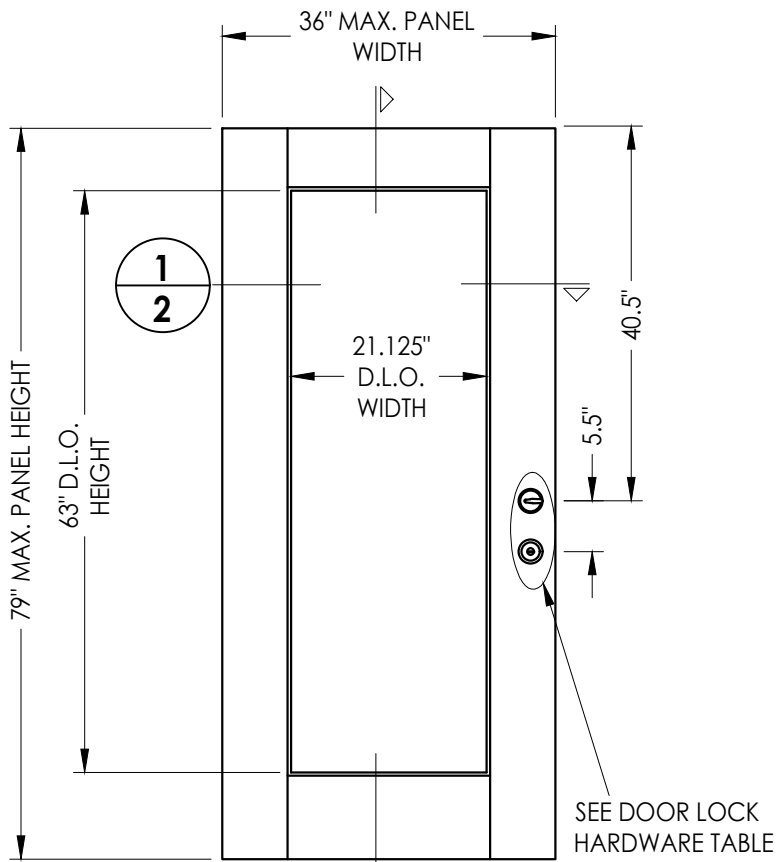
BUILDING CONSULTANTS, INC.  
P.O. Box 230, Valrico, FL 33595  
Phone No.: 813.659.9197  
FBPE Registry No. 9813

© 2019 R.W. BUILDING CONSULTANTS INC.

Z:\2023 FBC Drawings\Doorscapes, Inc\FL-28833 R3 Wood Door\FL28833.1.dwg

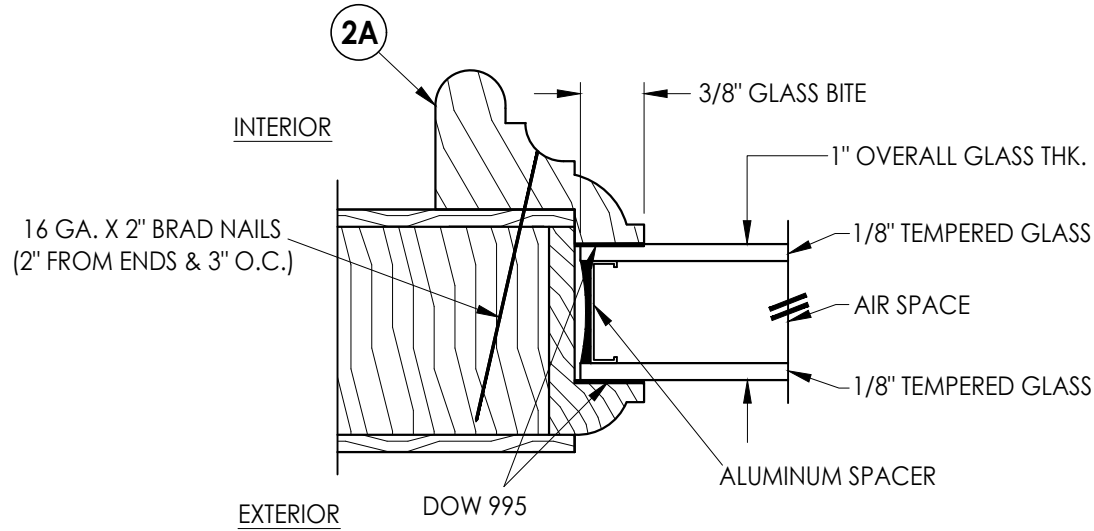


1  
2  
**HORIZONTAL CROSS SECTION**

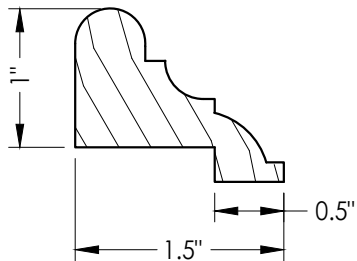


2  
2  
**40 DOOR PANEL**  
Doorscapes

WOOD DOOR COMPONENTS:  
OUTER SKIN & END CAPS: MAHOGANY (G= 0.5 MIN.)  
CORE: FINGER JOINT PINE (G= 0.42 MIN.)

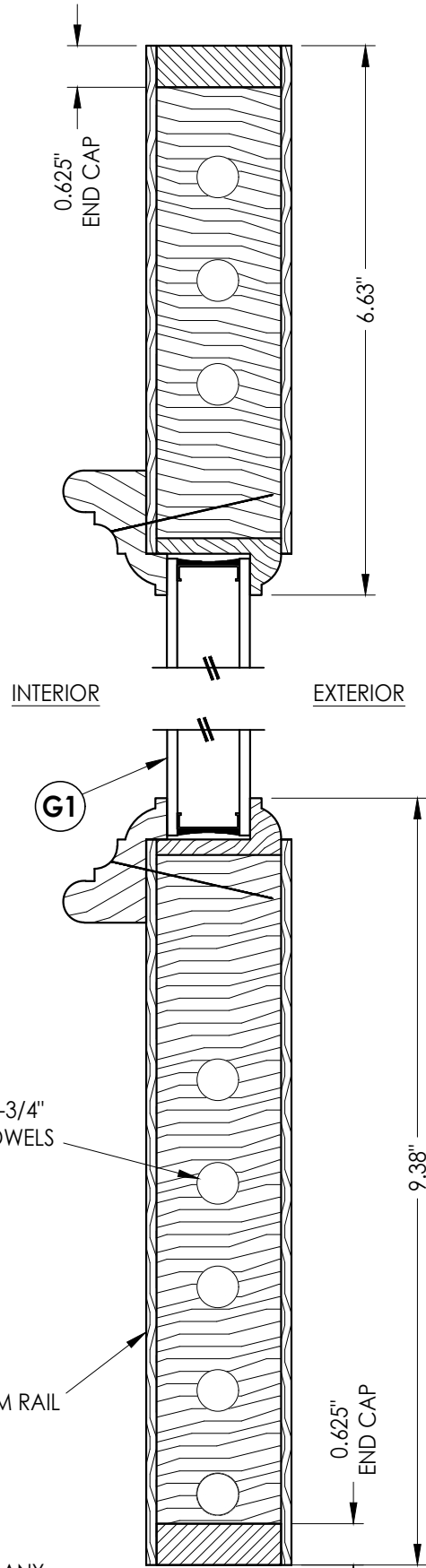


G1  
**GLAZING DETAIL**



2A  
**GLAZING BEAD**

HARDWARE TABLE		
MANUFACTURER	MODEL	
YALE	KNOB:	YE SERIES (10)
	DEADBOLT:	YE SERIES (82E)



2  
2  
**VERTICAL CROSS SECTION**

Documents Prepared By:  
Lyndon F. Schmidt  
P.E. No. 43409

BUILDING CONSULTANTS, INC.  
P.O. Box 230, Valrico, FL 33595  
Phone No.: 813.659.9197  
FBPE Registry No. 9813

RW

PRODUCT:		PART OR ASSEMBLY:	
DOORSCAPES WOOD DOOR		DOOR PANEL DETAILS & GLAZING DETAILS	

NO.	DATE	REVISIONS	
		BY	
2	8/02/23	LFS	UPDATE TO 8TH ED. (2023) FBC
1	8/06/20	LFS	UPDATE TO 7TH ED. (2020) FBC

DATE: 1/22/19

SCALE: N.T.S.

DWG. BY: MT

CHK. BY: LFS

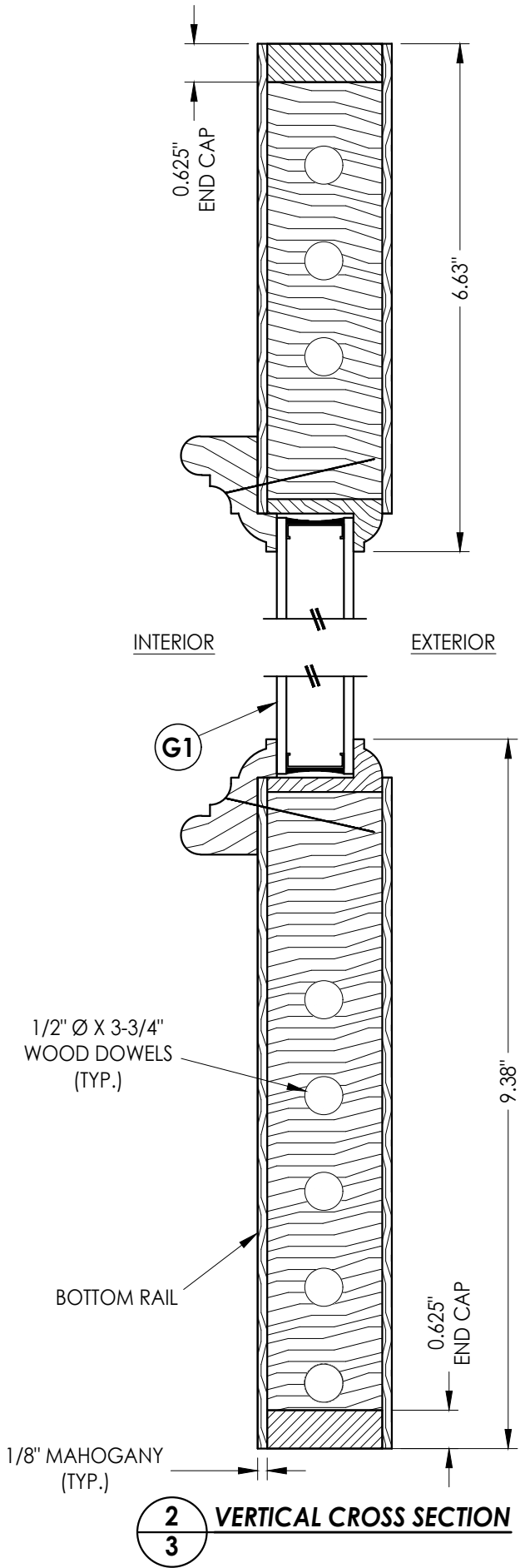
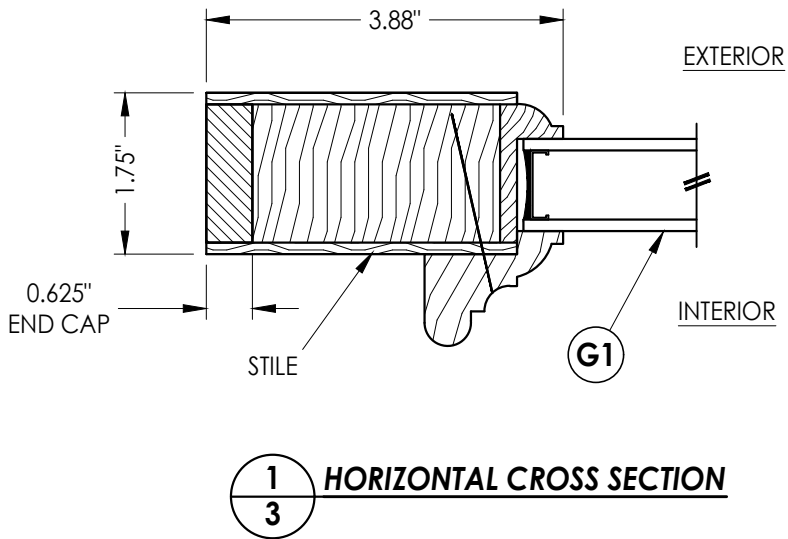
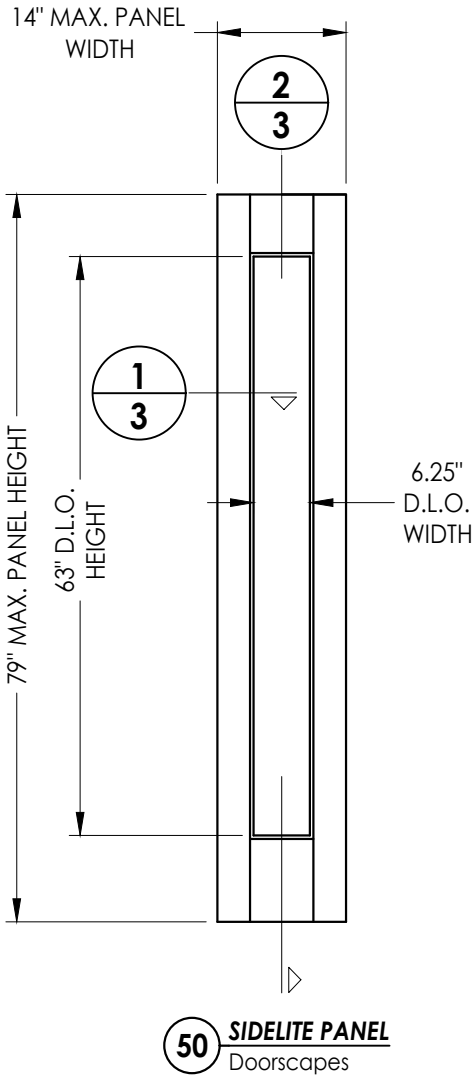
DRAWING NO.:

FL-28833.1

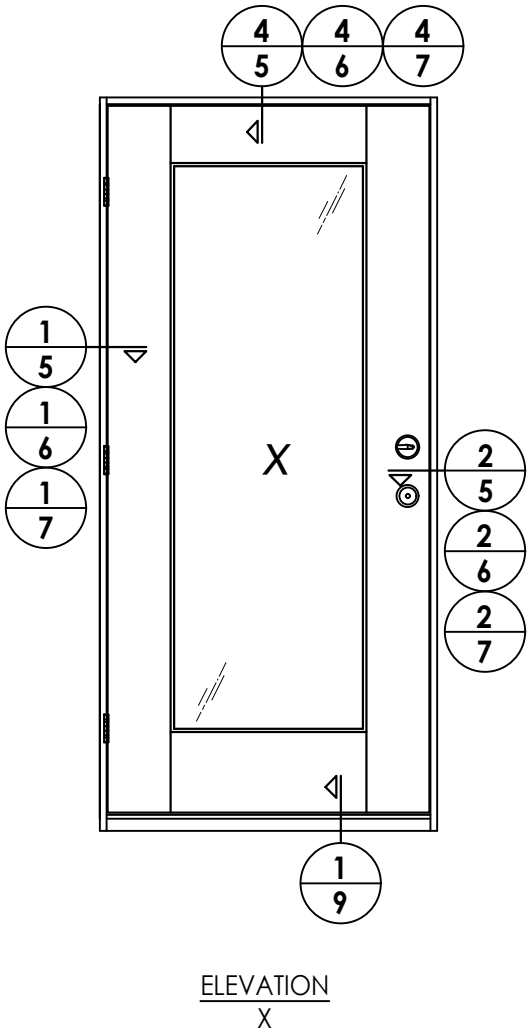
SHEET 2 OF 12

Z:\2023 FBC Drawings\Doorscapes, Inc\FL-28833 R3 Wood Door\FL28833.1.dwg

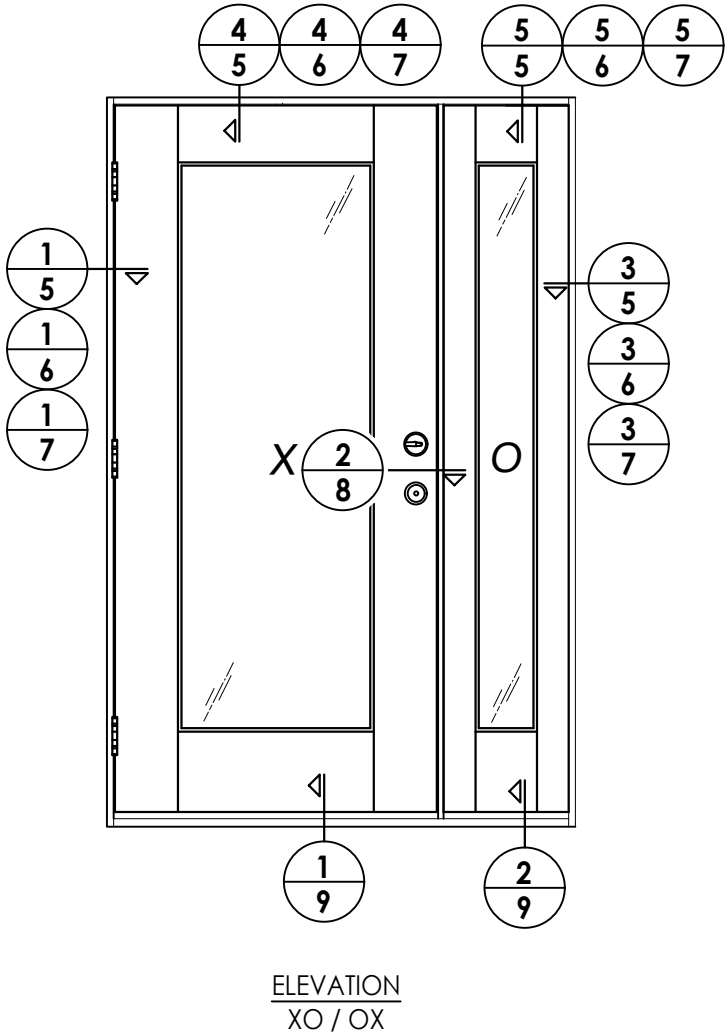
WOOD DOOR COMPONENTS:  
OUTER SKIN & END CAPS: MAHOGANY (G= 0.5 MIN.)  
CORE: FINGER JOINT PINE (G= 0.42 MIN.)



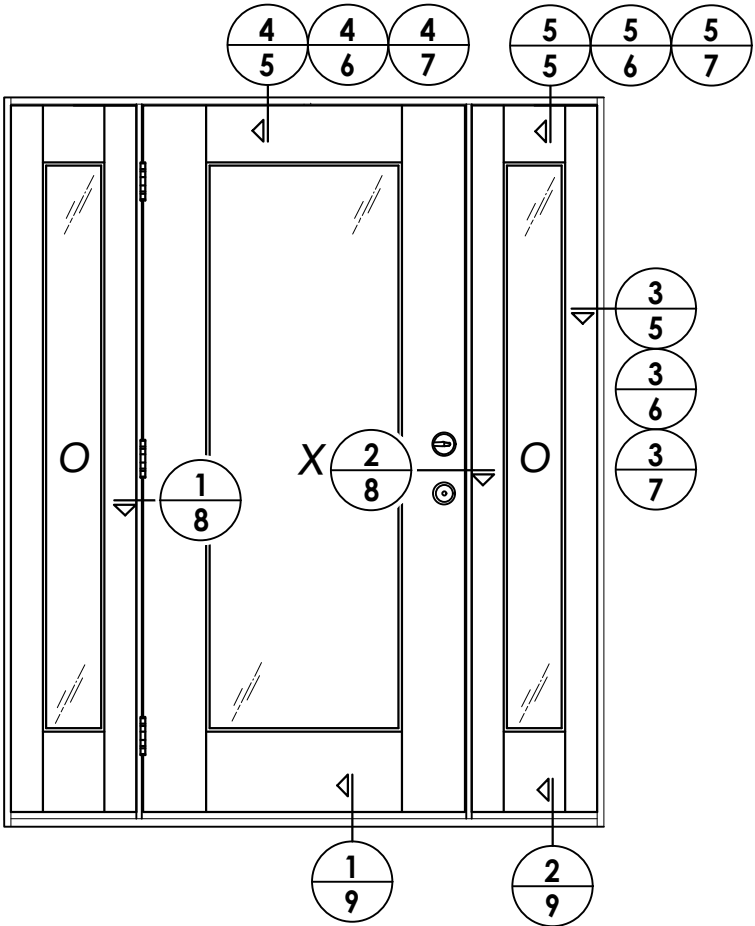
PRODUCT: DOORSCAPES WOOD DOOR				PART OR ASSEMBLY: SIDELITE PANEL DETAILS			
				LFS	FBC	LFS	BY
2	8/02/23	UPDATE TO 8TH ED.	(2023)	FBC	LFS		
1	8/06/20	UPDATE TO 7TH ED.	(2020)	FBC	LFS		
NO.	DATE						
REVISIONS							
DATE: 1/22/19				DRAWING NO.: FL-28833.1			
SCALE: N.T.S.				SHEET 3 OF 12			
DWG. BY: MT							
CHK. BY: LFS							
Documents Prepared By: Lyndon F. Schmidt P.E. No. 43409				BUILDING CONSULTANTS, INC. P.O. Box 230, Valrico, FL 33595 Phone No.: 813.659.9197 FBPE Registry No. 9813			



ELEVATION  
X



ELEVATION  
XO / OX



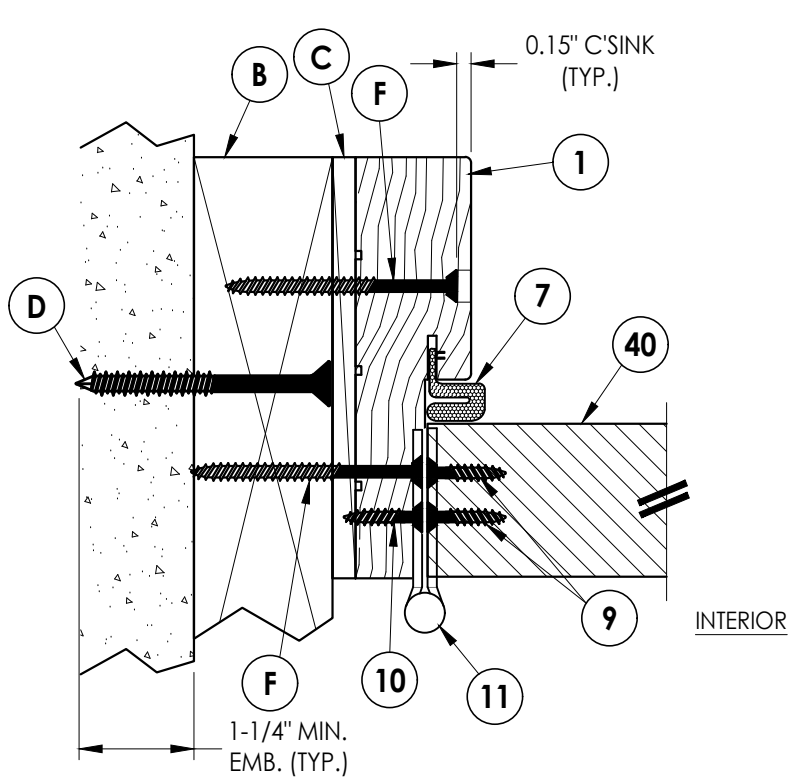
DATE:	1/22/19
SCALE:	N.T.S.
DWG. BY:	MT
CHK. BY:	LFS
DRAWING NO.:	FL-28833.1
SHEET	4 OF 12

NO.	DATE	REVISIONS
2	8/02/23	UPDATE TO 8TH ED. (2023) FBC LFS
1	8/06/20	UPDATE TO 7TH ED. (2020) FBC LFS
		BY

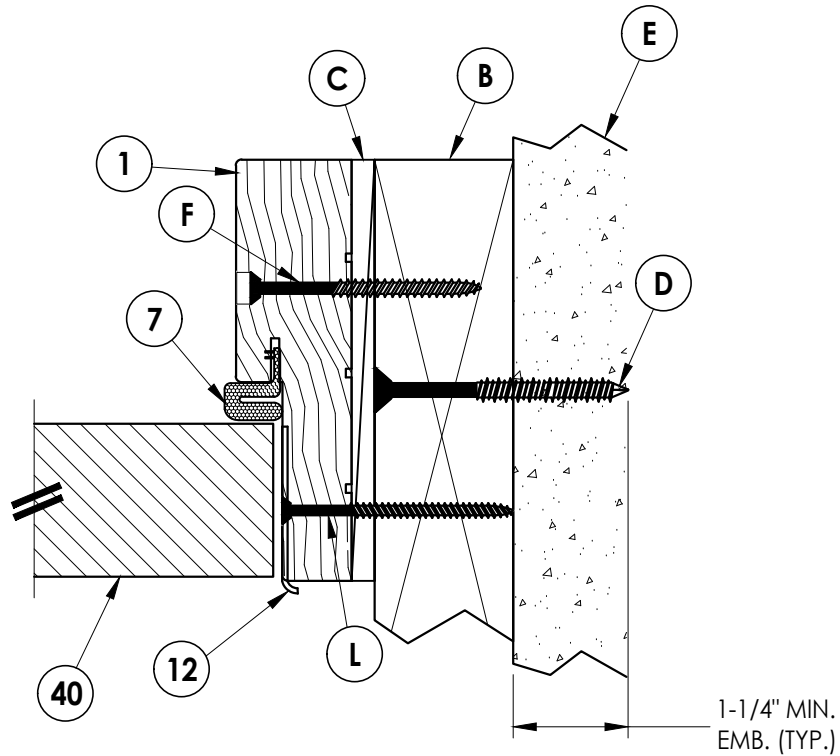
PRODUCT:	DOORSCAPES WOOD DOOR
PART OR ASSEMBLY:	ELEVATIONS

Documents Prepared By: Lyndon F. Schmidt P.E. No. 43409	<i>RW</i> BUILDING CONSULTANTS, INC. P.O. Box 230, Valrico, FL 33595 Phone No.: 813.659.9197 FBPE Registry No. 9813
---	---

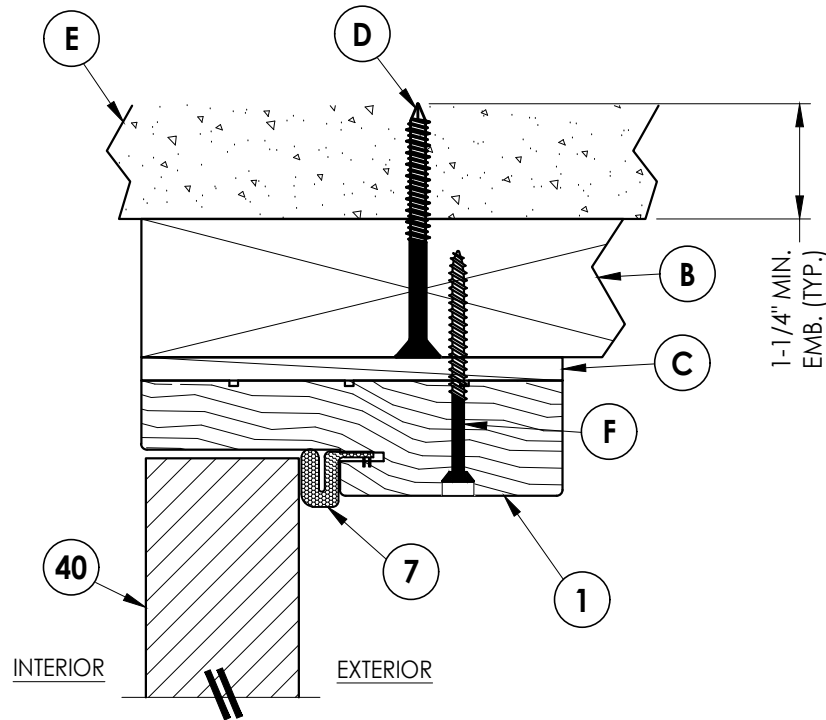
Z:\2023 FBC Drawings\Doorscapes, Inc\FL-28833 R3 Wood Door\FL28833.1.dwg



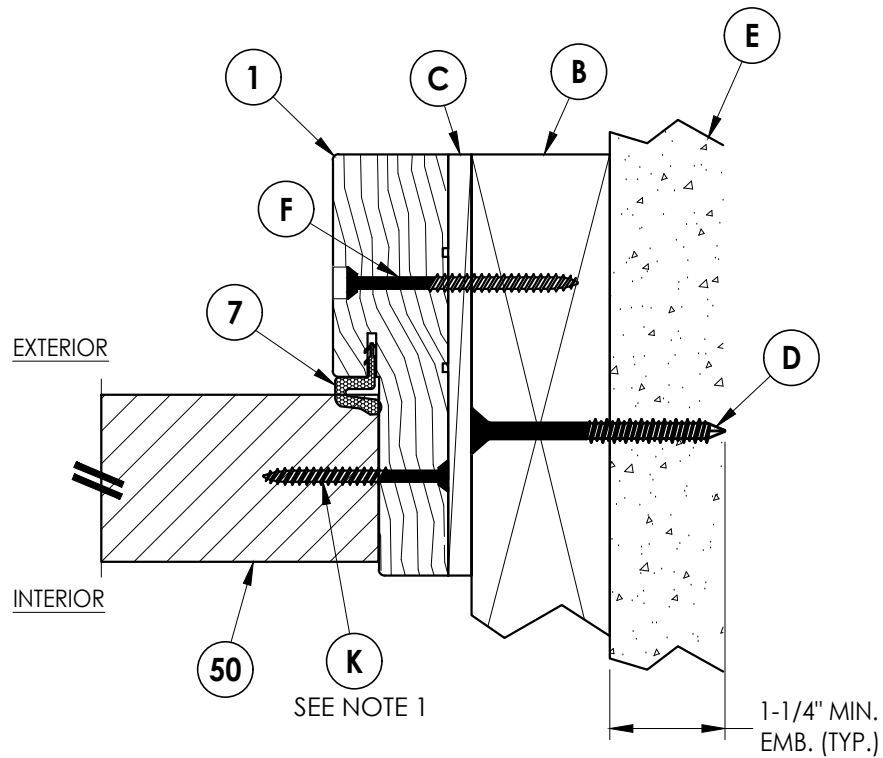
**1**  
**5** **HORIZONTAL CROSS SECTION**  
Inswing  
2X Buck Construction



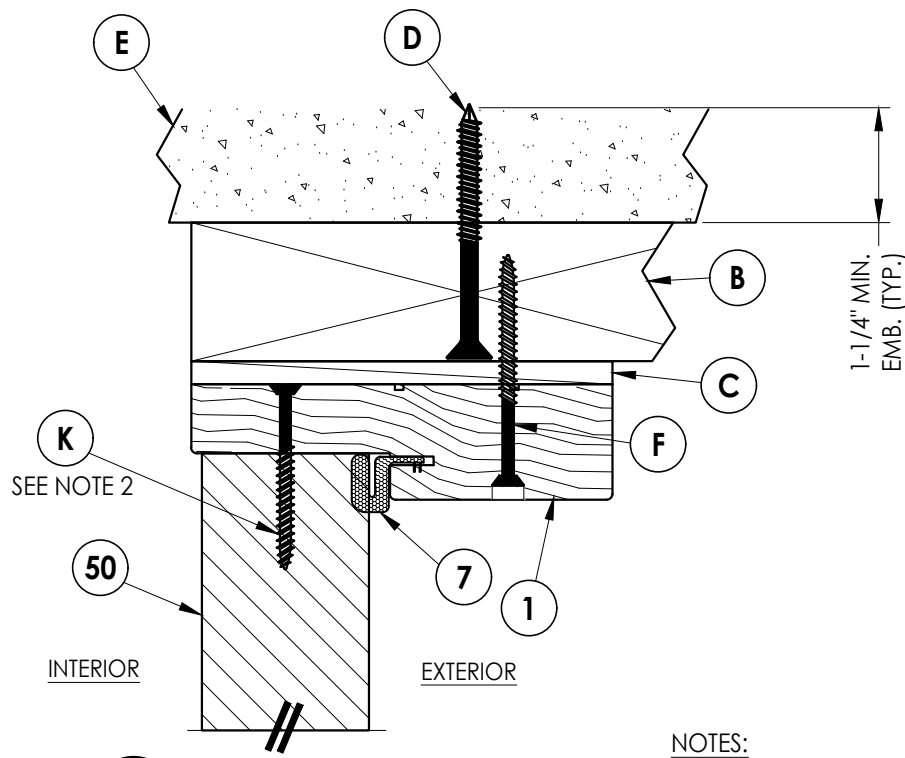
**2**  
**5** **HORIZONTAL CROSS SECTION**  
Inswing  
2X Buck Construction



**4**  
**5** **VERTICAL CROSS SECTION**  
Inswing  
2X Buck Construction



**3**  
**5** **HORIZONTAL CROSS SECTION**  
Inswing  
2X Buck Construction



**5**  
**5** **VERTICAL CROSS SECTION**  
Inswing  
2X Buck Construction

NOTES:

- Sidelite attached @ 6" from each end plus 4 more screws equally spaced between (6 screws total per jamb).
- Sidelite attached @ 3" from each end (2 screws total @ head).

Documents Prepared By:  
Lyndon F. Schmidt  
P.E. No. 43409

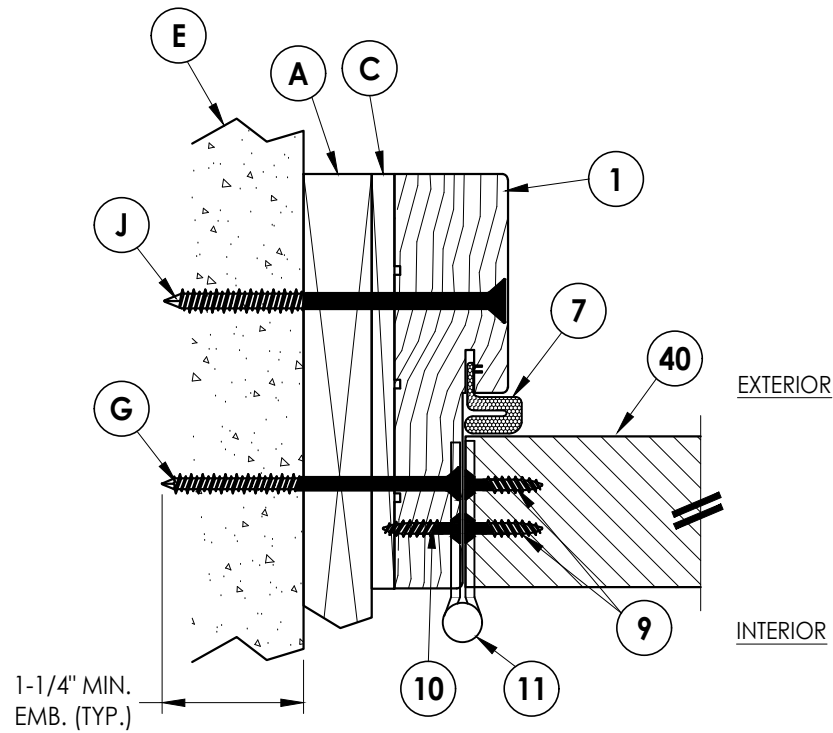
**R<sup>W</sup>** BUILDING CONSULTANTS, INC.  
P.O. Box 230, Valrico, FL 33595  
Phone No.: 813.659.9197  
FBPE Registry No. 9813

PRODUCT:	DOORSCAPES WOOD DOOR
	PART OR ASSEMBLY: HORIZONTAL & VERTICAL CROSS SECTIONS (2X BUCK)

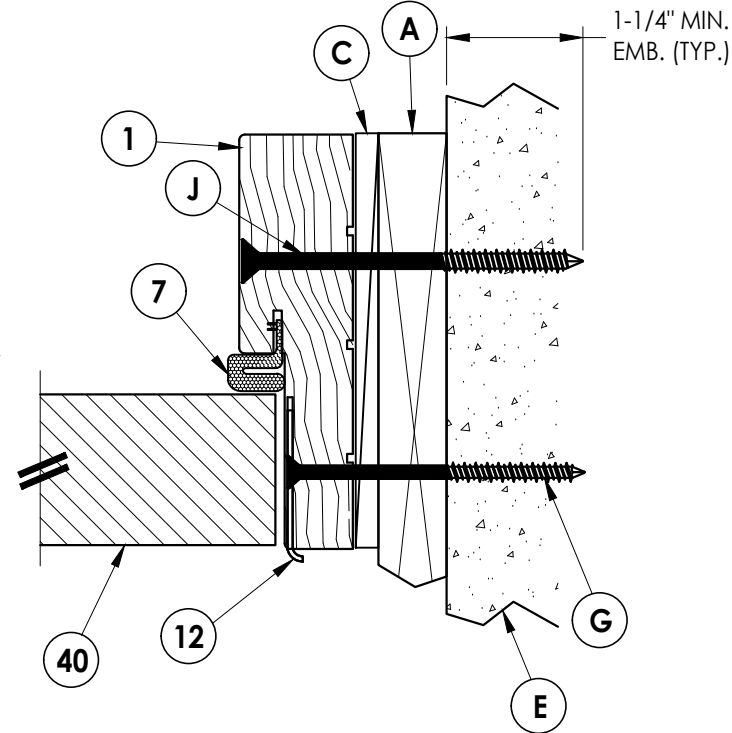
NO.	DATE	REVISIONS		
		BY	DATE	DESCRIPTION
2	8/02/23	LFS		UPDATE TO 8TH ED. (2023) FBC
1	8/06/20	LFS		UPDATE TO 7TH ED. (2020) FBC

DATE:	1/22/19
SCALE:	N.T.S.
DWG. BY:	MT
CHK. BY:	LFS
DRAWING NO.:	FL-28833.1
SHEET	5 OF 12

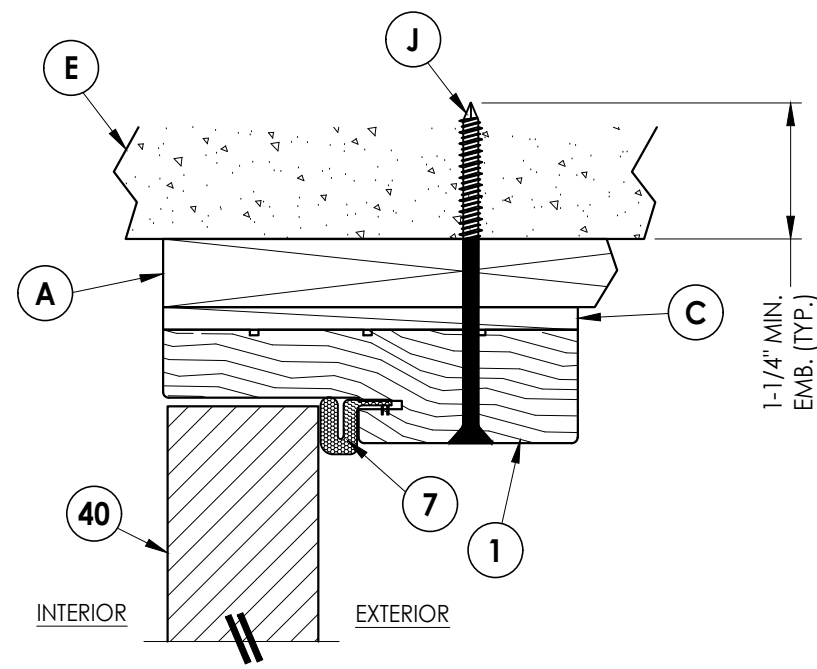
Z:\2023 FBC Drawings\DoorScapes, Inc\FL-28833 R3 Wood Door\FL28833.1.dwg



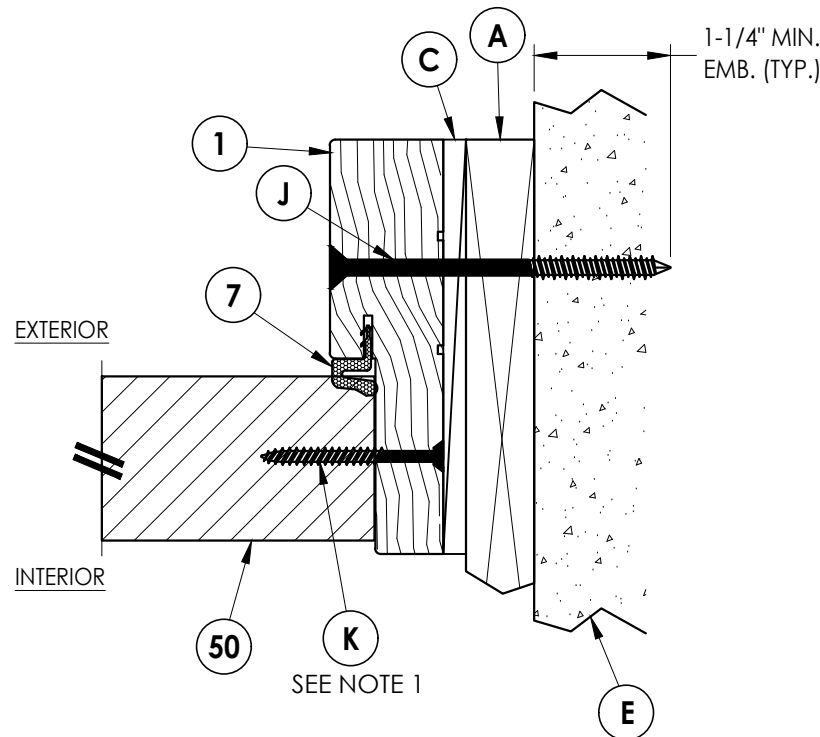
**1**  
**6** **HORIZONTAL CROSS SECTION**  
Inswing  
1X Buck Construction



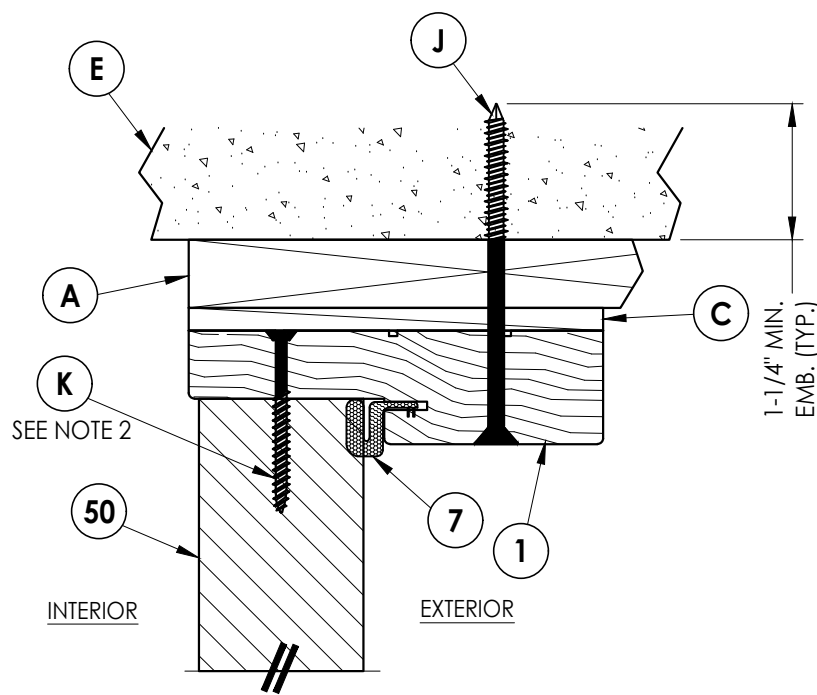
**2**  
**6** **HORIZONTAL CROSS SECTION**  
Inswing  
1X Buck Construction



**4**  
**6** **VERTICAL CROSS SECTION**  
Inswing  
1X Buck Construction



**3**  
**6** **HORIZONTAL CROSS SECTION**  
Inswing  
1X Buck Construction



**5**  
**6** **VERTICAL CROSS SECTION**  
Inswing  
1X Buck Construction

NOTES:

- Sidelite attached @ 6" from each end plus 4 more screws equally spaced between (6 screws total per jamb).
- Sidelite attached @ 3" from each end (2 screws total @ head).

Documents Prepared By:  
Lyndon F. Schmidt  
P.E. No. 43409

**RW** BUILDING CONSULTANTS, INC.  
P.O. Box 230, Valrico, FL 33595  
Phone No.: 813.659.9197  
FBPE Registry No. 9813

PRODUCT:	DOORSCAPES WOOD DOOR	
	PART OR ASSEMBLY: HORIZONTAL & VERTICAL CROSS SECTIONS (1X BUCK)	

NO.	DATE	REVISIONS	
		BY	
2	8/02/23	UPDATE TO 8TH ED. (2023)	FBC LFS
1	8/06/20	UPDATE TO 7TH ED. (2020)	FBC LFS

DATE: 1/22/19

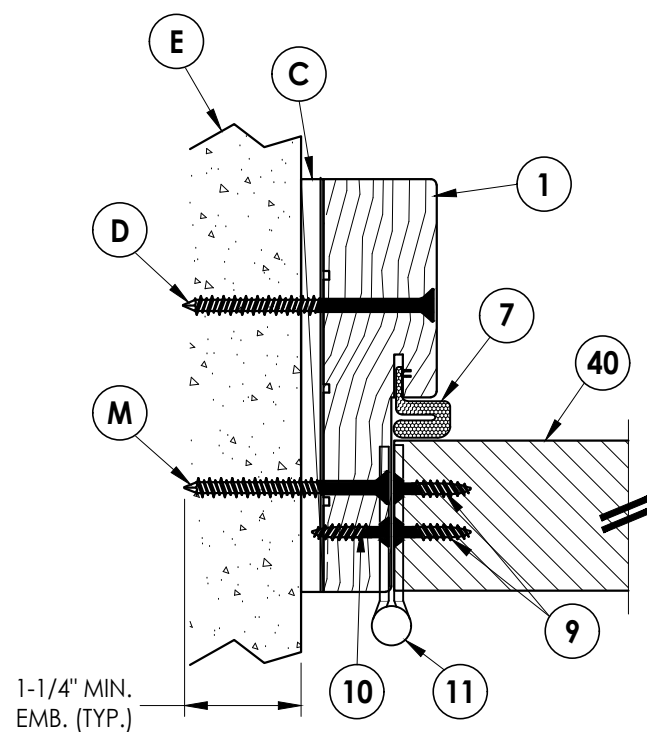
SCALE: N.T.S.

DWG. BY: MT

CHK. BY: LFS

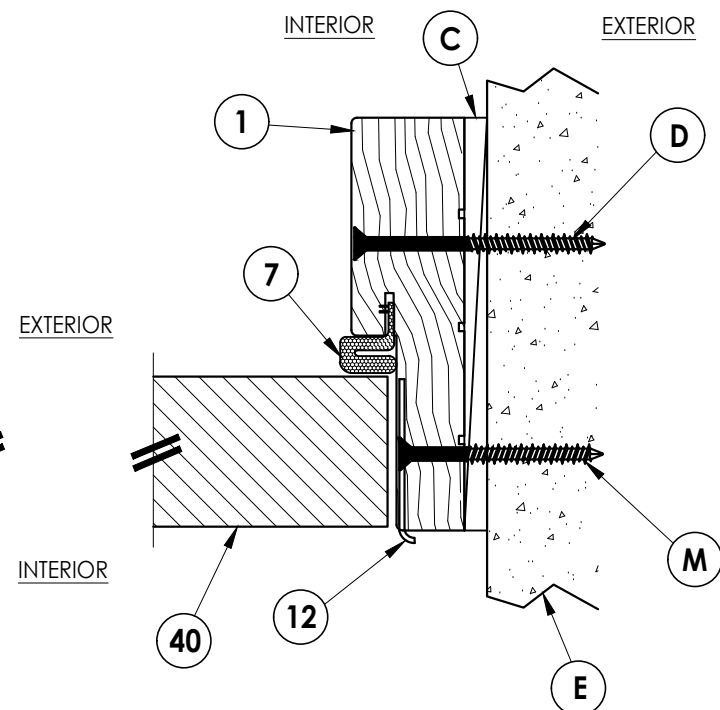
DRAWING NO.: FL-28833.1

SHEET 6 OF 12

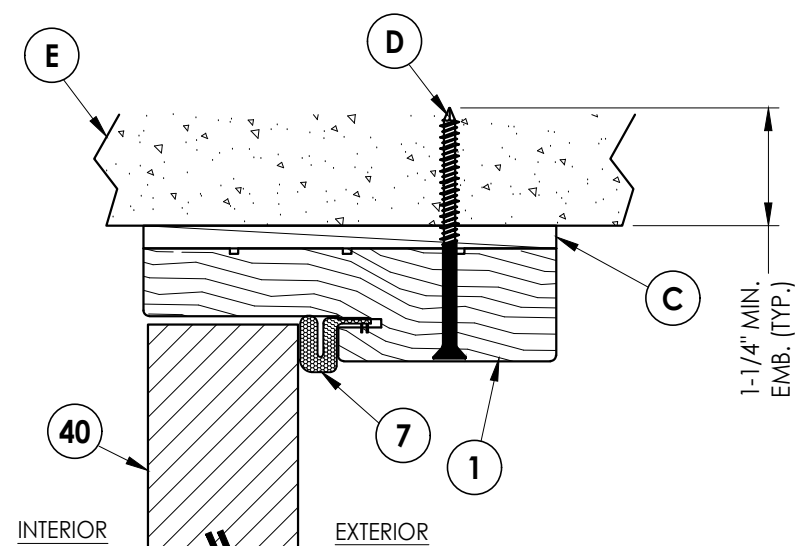


## 1 7 **HORIZONTAL CROSS SECTION**

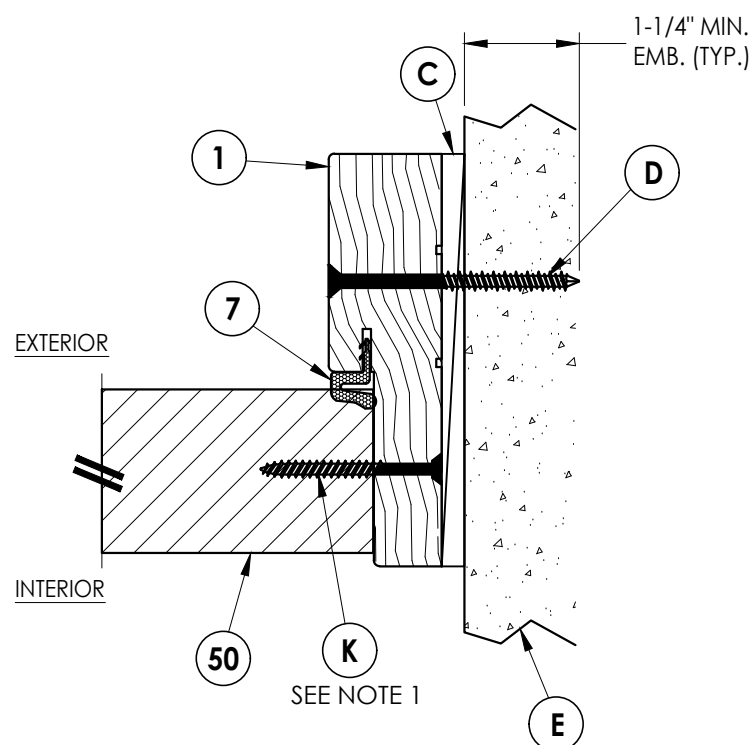
Inswing  
Shown Direct to Masonry



**2** **HORIZONTAL CROSS SECTION**  
**7** Inswing  
Shown Direct to Masonry

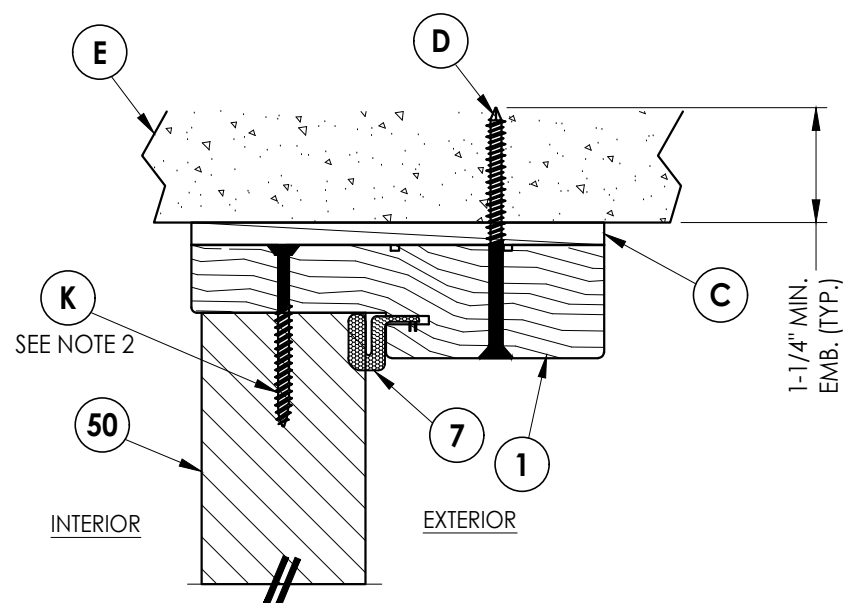


**4** **VERTICAL CROSS SECTION**  
**7** Inswing  
 Shown Direct to Masonry



### 3 7 **HORIZONTAL CROSS SECTION**

Inswing  
Shown Direct to Masonry



**5** **VERTICAL CROSS SECTION**  
**7** Inswing  
Shown Direct to Masonry

NOTES:

1. Sidelite attached @ 6" from each end plus 4 more screws equally spaced between (6 screws total per jamb).
2. Sidelite attached @ 3" from each end (2 screws total @ head).

[illegible]



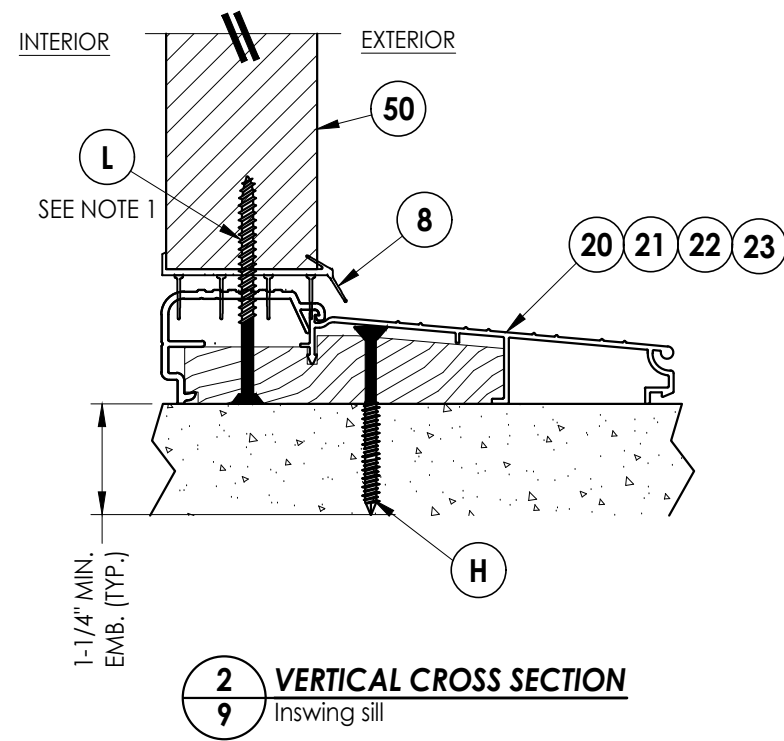
- NOTES:

SHEET 8 OF 12

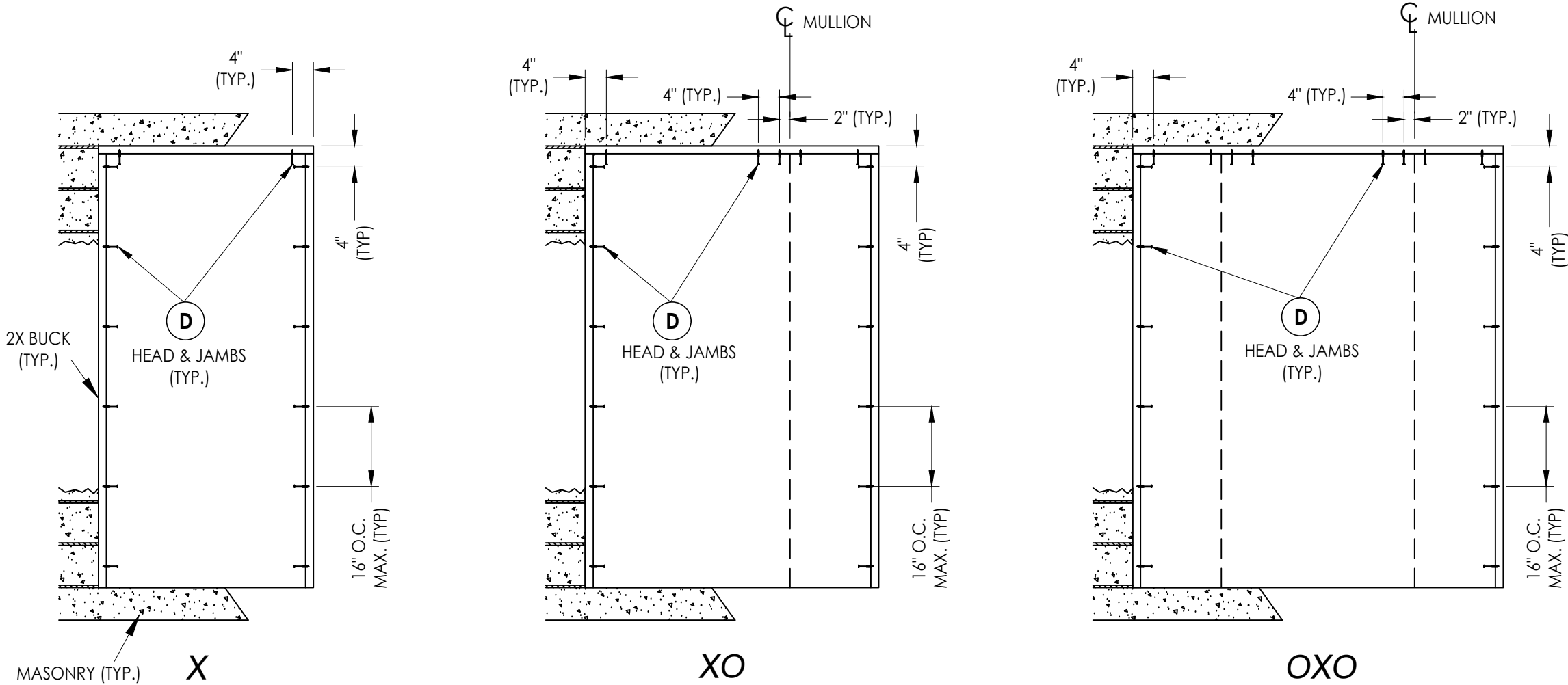
RW

© 2019 R.W. BUILDING CONSULTANTS INC.



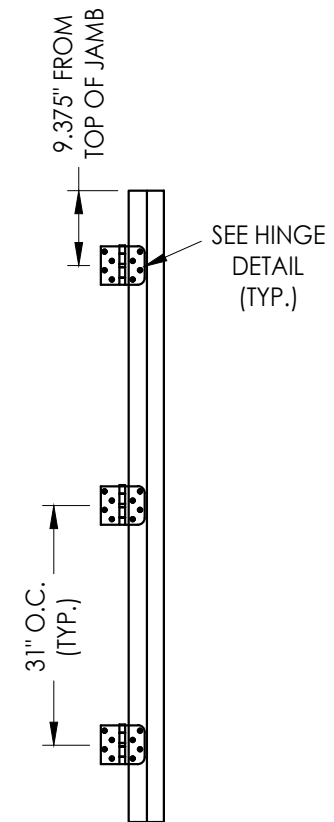
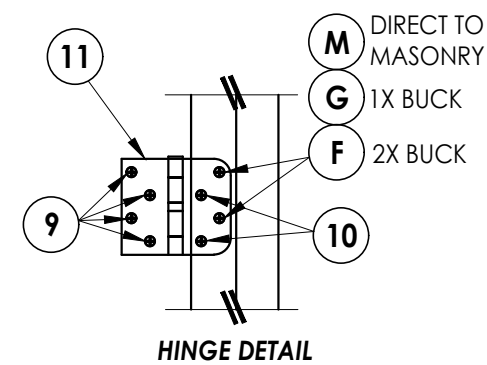
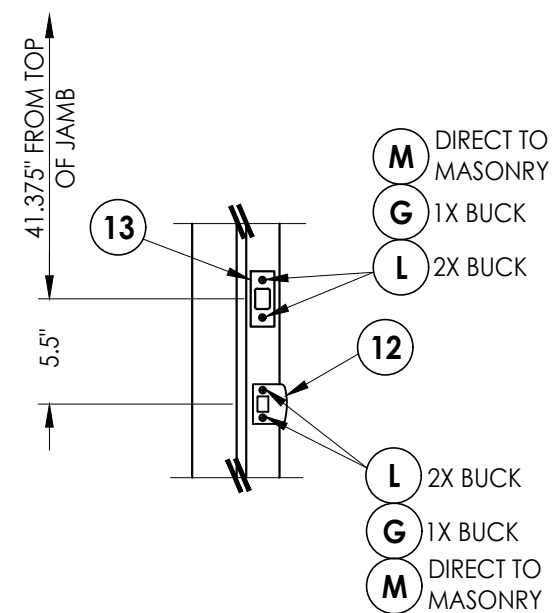
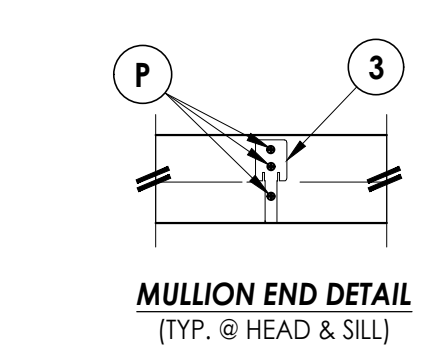
[illegible]

***RW*** BUILDING CONSULTANTS, INC.  
P.O. Box 230, Valrico, FL 33595  
Phone No.: 813.659.9197  
FBPE Registry No. 9813



2X BUCK ANCHORING

Documents Prepared By: Lyndon F. Schmidt P.E. No. 43409				BUILDING CONSULTANTS, INC. P.O. Box 230, Valrico, FL 33595 Phone No.: 813.659.9197 FBPE Registry No. 9813			
PRODUCT: DOORSCAPES WOOD DOOR				PART OR ASSEMBLY: BUCK ANCHORING			
				LFS	FBC	UPDATE TO 8TH ED. (2023)	
				LFS	FBC	UPDATE TO 7TH ED. (2020)	
				BY		NO. DATE	
				REVISIONS			
DATE: 1/22/19							
SCALE: N.T.S.							
DWG. BY: MT							
CHK. BY: LFS							
DRAWING NO.: FL-28833.1							
SHEET 10 OF 12							



DATE: 1/22/19		REVISIONS		NO. DATE		UPDATE TO 8TH ED. (2023) FBC		UPDATE TO 7TH ED. (2020) FBC		LFS	
DRAWING NO.: FL-28833.1		CHK. BY: LFS		DWG. BY: MT		SCALE: N.T.S.		DATE: 1/22/19		REVISIONS	
SHEET 11 OF 12											
PRODUCT: DOORSCAPES WOOD DOOR		PART OR ASSEMBLY: FRAME ANCHORING & HARDWARE DETAILS		<div style="display: flex; justify-content: space-between; align-items: center;"> <div style="width: 45%;"> <p>Documents Prepared By:            Lyndon F. Schmidt            P.E. No. 43409</p> </div> <div style="width: 45%; text-align: right;"> <p>BUILDING CONSULTANTS, INC.            P.O. Box 230, Valrico, FL 33595            Phone No.: 813.659.9197            FBPE Registry No. 9813</p> </div> </div>							

Z:\2023 FBC Drawings\DoorScapes, Inc\FL-28833 R3 Wood Door\FL28833.1.dwg

BILL OF MATERIALS		
ITEM #	DESCRIPTION	MATERIAL
A	1X BUCK (G >= 0.42)	WOOD
B	2X BUCK (G >= 0.42)	WOOD
C	1/4" MAX. SHIM SPACE	-
D	1/4" X 2-3/4" PFH DeWALT OR ITW CONCRETE SCREW	STEEL
E	MASONRY - 3,000 PSI MIN. CONCRETE CONFORMING TO ACI 301 OR HOLLOW BLOCK CONFORMING TO ASTM C90	CONCRETE
F	#10 X 2-1/2" PFH WOOD SCREW (1.15" MIN. EMBEDMENT)	STEEL
G	3/16" X 3-1/4" PFH ITW CONCRETE SCREW	STEEL
H	1/4" X 2-1/4" PFH DeWALT OR ITW CONCRETE SCREW	STEEL
J	1/4" X 3-3/4" PFH DeWALT OR ITW CONCRETE SCREW	STEEL
K	#10 X 2" PFH WOOD SCREW	STEEL
L	#8 X 2-1/2" PFH WOOD SCREW	STEEL
M	3/16" X 2-1/4" PFH ITW CONCRETE SCREW	STEEL
P	#7 X 2-1/2" DRYWALL SCREW	STEEL
1	FINGER JOINT PINE JAMB (G >= 0.42)	WOOD
3	INTEGRAL MULLION - 1.625" WIDE (PINE, G >= 0.42)	WOOD
7	WEATHERSTRIP	FOAM
8	DOOR/SIDELITE BOTTOM SWEEP	VINYL
9	#9 X 1" PFH WOOD SCREW	STEEL
10	#10 X 3/4" PFH WOOD SCREW	STEEL
11	4" X 4" BUTT HINGE	STEEL
12	LATCH STRIKE PLATE	STEEL
13	DEADBOLT STRIKE PLATE	STEEL
20	INSWING THRESHOLD (AFCO A-125)	ALUM/WOOD
21	INSWING THRESHOLD (AFCO A-125)	ALUM/COMP
22	INSWING THRESHOLD (AFCO A-276)	ALUM/WOOD
23	INSWING THRESHOLD (AFCO A-280)	ALUM/WOOD
40	DOOR PANEL - SEE DOOR PANEL DETAIL SHEET FOR DETAILS	-
50	SIDELITE PANEL - SEE SIDELITE PANEL DETAIL SHEET FOR DETAILS	-

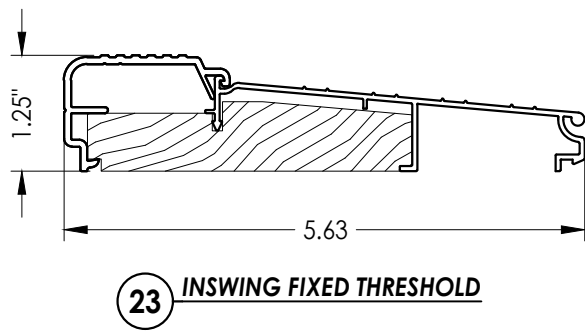
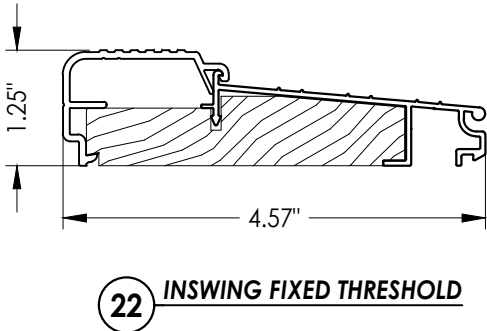
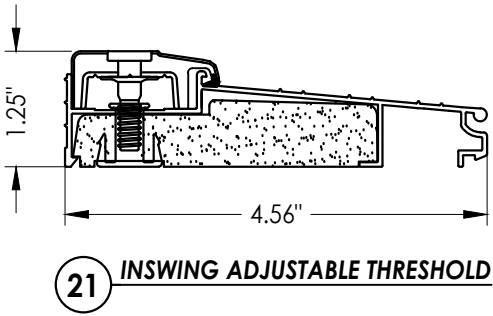
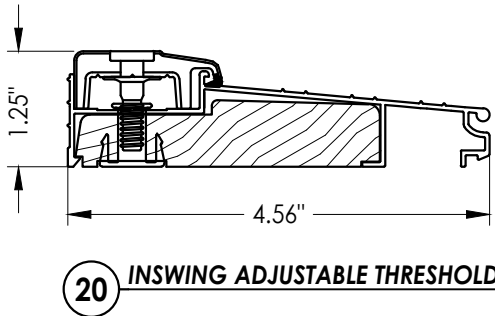
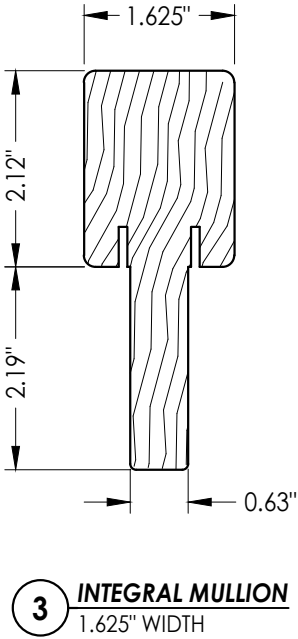
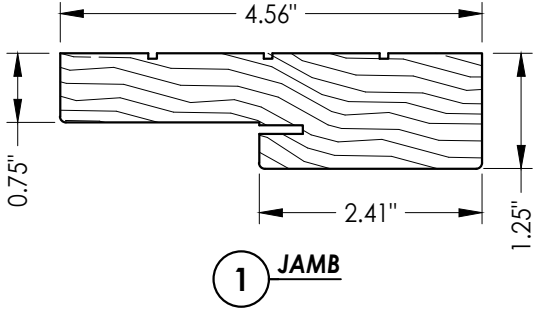
CONCRETE ANCHOR NOTES:

- Concrete anchor locations at the corners may be adjusted to maintain the min. edge distance to mortar joints.
- Concrete anchor locations noted as "MAX. ON CENTER" must be adjusted to maintain the min. edge distance to mortar joints, additional concrete anchors may be required to ensure the "MAX. ON CENTER" dimension are not exceeded.
- Concrete anchor table:

ANCHOR TYPE	ANCHOR SIZE	MIN. EMBEDMENT	MIN. CLEARANCE TO MASONRY EDGE	MIN. CLEARANCE TO ADJACENT ANCHOR
ITW BUILDDEX TAPCON®	3/16"	1-1/4"	3"	1-1/2"
	1/4"	1-1/4"	2"	4"
DeWALT® ULTRACON®	1/4"	1-1/4"	1"	4"

WOOD SCREW INSTALLATION NOTES:

- Maintain a minimum 5/8" edge distance, 1" end distance, & 1" o.c. spacing of wood screws to prevent the splitting of wood.



Documents Prepared By:  
Lyndon F. Schmidt  
P.E. No. 43409

**RW** BUILDING CONSULTANTS, INC.  
P.O. Box 230, Valrico, FL 33595  
Phone No.: 813.659.9197  
FBPE Registry No. 9813

PRODUCT:  
DOORSCAPES  
WOOD DOOR

PART OR ASSEMBLY:  
BILL OF MATERIALS  
& COMPONENTS

NO.	DATE	REVISIONS
2	8/02/23	UPDATE TO 8TH ED. (2023) FBC
1	8/06/20	UPDATE TO 7TH ED. (2020) FBC

DATE: 1/22/19

SCALE: N.T.S.

DWG. BY: MT

CHK. BY: LFS

DRAWING NO.:

FL-28833.1

SHEET 12 OF 12